

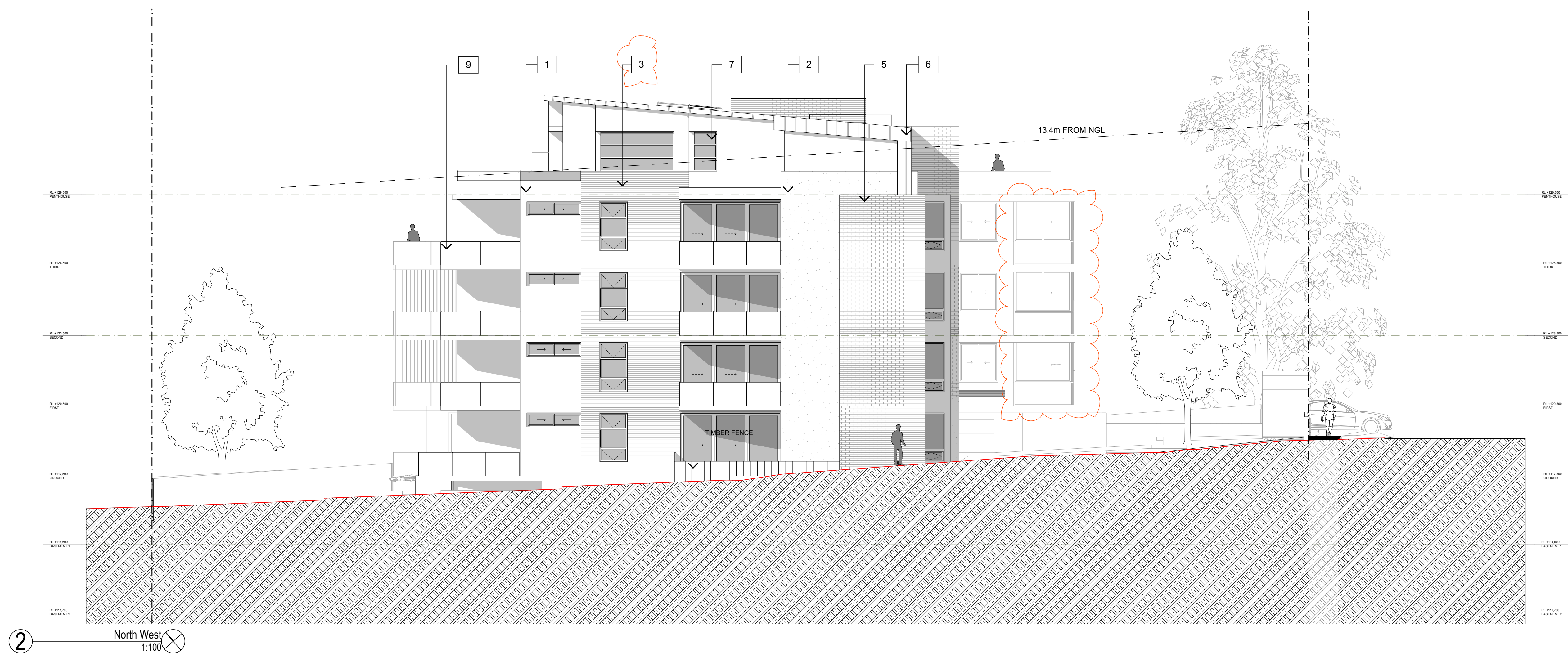
- LEGEND:
1. RENDER & PAINT FINISH, DULUX 'ANTIQUE WHITE U.S.A'
  2. RENDER & PAINT FINISH, WATTYL 'URBAN GREY'
  3. BANDED RENDER & PAINT FINISH, WATTYL 'URBAN GREY'
  4. RENDER & PAINT FINISH, RESENE DARK BUFF
  5. FACE BRICK, BORAL RIO BLUE
  6. METAL DECK ROOFING AND CLADDING, COLORBOND JASPER
  7. ALUMINIUM FRAMED GLAZING
  8. ALUMINIUM FRAMED SLIDING GLASS PANELS ABOVE FROSTED GLASS BALUSTRADE
  9. ALUMINIUM FRAMED CLEAR GLASS BALUSTRADE
  10. ALUMINIUM FRAMED GLAZED LOUVRES

<b>MACKENZIE ARCHITECTS</b> Chartered Architect No. 6033 ABN 46 129 502 772 4/3 The Postern Castlereagh NSW 2068 Phone: (02) 9967 9966 Fax: (02) 9967 9977 www.mackenziearchitects.com.au info@mackenziearchitects.com.au		Date: 2011.08.30 Drawn: 2011.08.30 Checked: 2011.08.30 Project: 2011.08.30
Client: AGH Holdings Pty Ltd Job: <b>MULTI-RESIDENTIAL DEVELOPMENT</b> 573-585 Pacific Highway, Killara		<b>MACKENZIE ARCHITECTS</b>
Drawing Title: <b>ELEVATIONS 1</b> South West, South West (fence), South East, Workshop		
Scale: 1:100, 1:150, 1:200	Date:	
Project No: <b>10/15</b>	Drawing No.: <b>A-200</b>	Revision: <b>C</b>
Drawn: FA	Checked By: DM	Date: 2011.08.30
Copyright Mackenzie Architects is the owner of the copyright in all drawings, designs, plans, designs and specifications. They must not be used, reproduced or copied in whole or part without prior written consent of Mackenzie Architects. Copyright Mackenzie Architects. All rights reserved.		





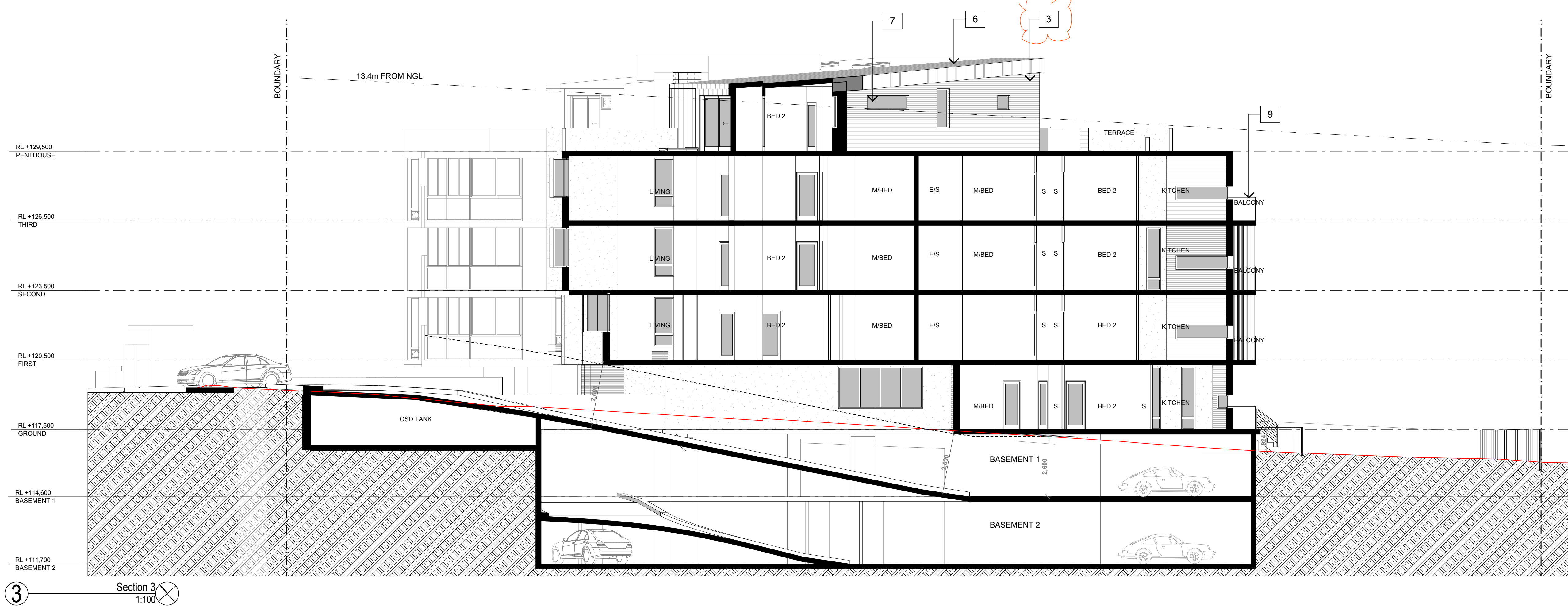
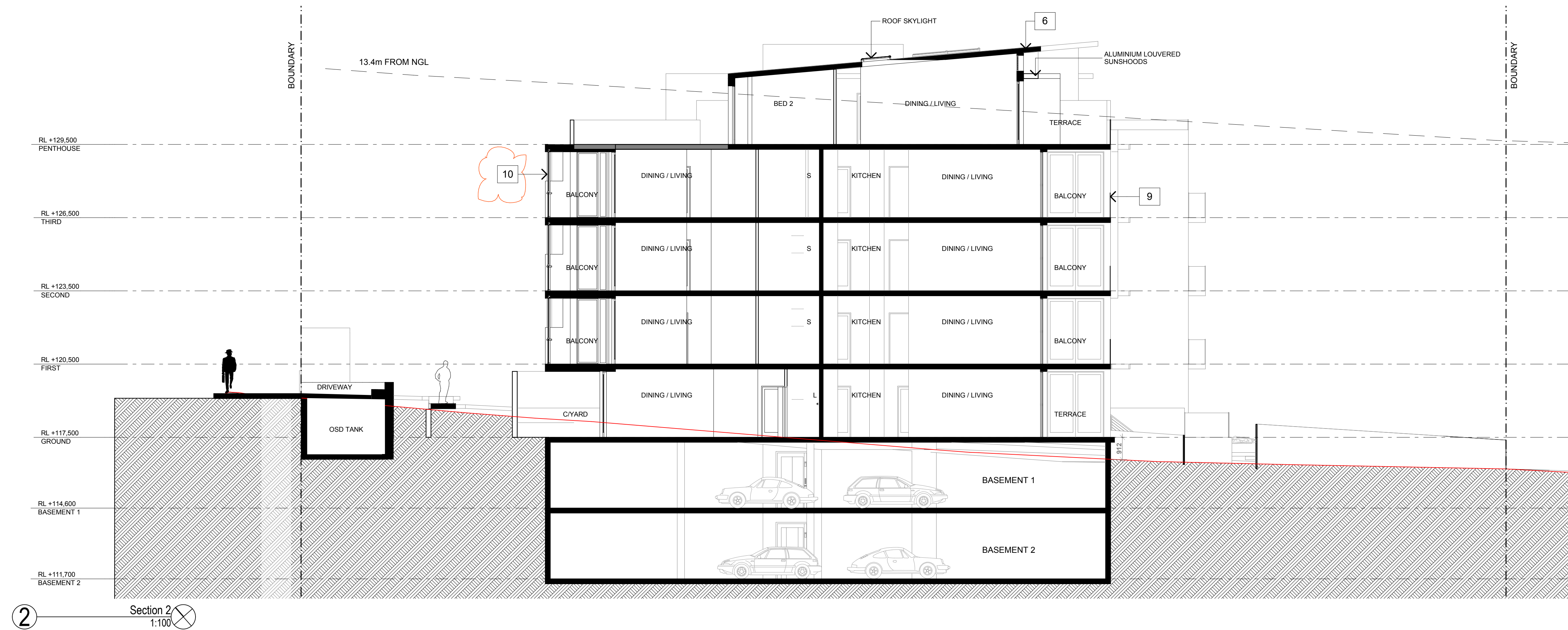
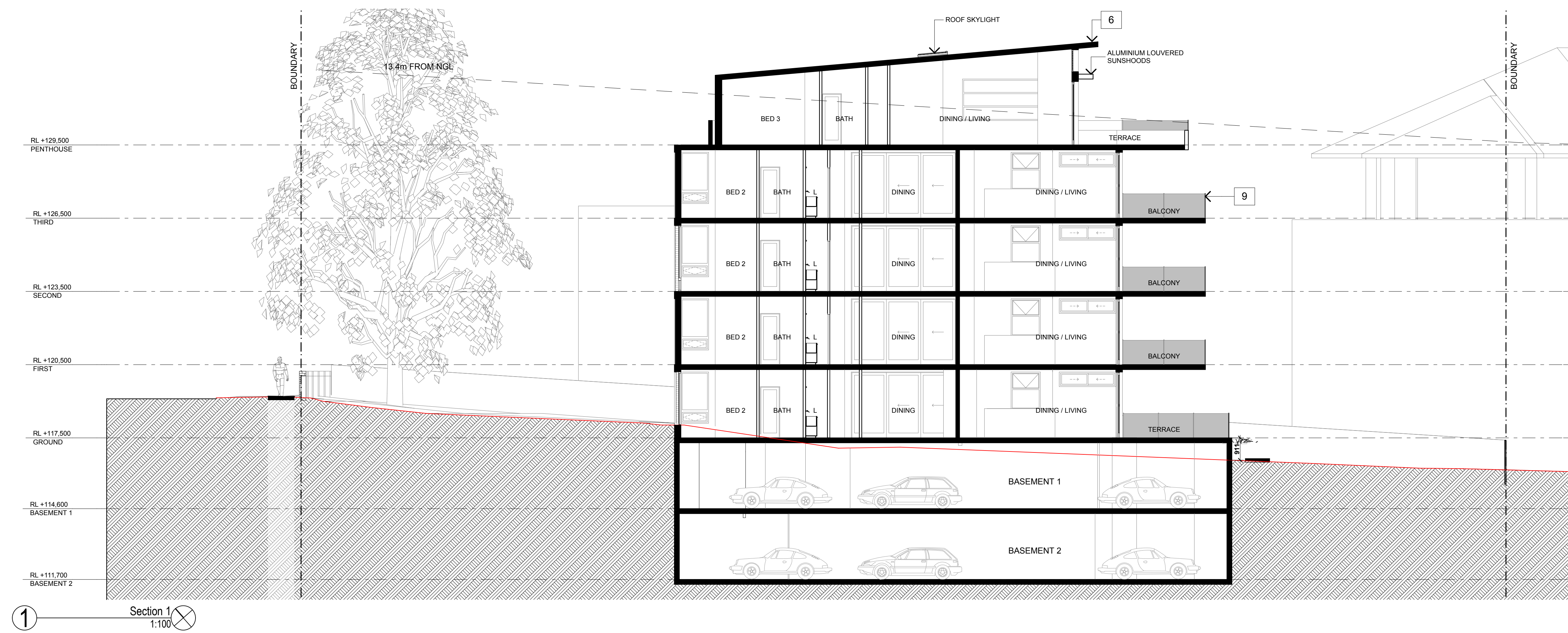
- LEGEND:
1. RENDER & PAINT FINISH, DULUX 'ANTIQUE WHITE U.S.A'
  2. RENDER & PAINT FINISH, 'WATTYL' 'URBAN GREY'
  3. BANDED RENDER & PAINT FINISH, 'WATTYL' 'URBAN GREY'
  4. RENDER & PAINT FINISH, RESENE DARK BUFF
  5. FACE BRICK, BORAL RIO BLUE
  6. METAL DECK ROOFING AND CLADDING, COLORBOND JASPER
  7. ALUMINIUM FRAMED GLAZING
  8. ALUMINIUM FRAMED SLIDING GLASS PANELS ABOVE FROSTED GLASS BALUSTRADE
  9. ALUMINIUM FRAMED CLEAR GLASS BALUSTRADE
  10. ALUMINIUM FRAMED GLAZED LOUVRES



<b>MACKENZIE ARCHITECTS</b> Chartered Architect No. 6033 ABN 46 129 502 772 4/3 The Postern Castlecrag NSW 2068 Phone: (02) 9967 9966 Fax: (02) 9967 9977 www.mackenziearchitects.com.au info@mackenziearchitects.com.au		C: DA APPROVED R: DA APPROVED A: DA SUBMITTED TO COUNCIL RE: PERMIT	PA: 2011.08.30 RA: 2011.08.30 FA: 2010.12.28 BY: [Signature]
Client: AGH Holdings Pty Ltd Job: <b>MULTI-RESIDENTIAL DEVELOPMENT</b> 573-585 Pacific Highway, Killara Drawing Title: ELEVATIONS 2 North East, North West, Worksheet			
Scale: 1:100, 1:150 BS		Date:	
Project No: <b>10/15</b>	Drawing No.: <b>A-201</b>	Revision: <b>C</b>	
Drawn: FA	Checked By: DM	Date: 2008/06/11	
Copyright Mackenzie Architects is the owner of the copyright subsisting in these drawings, plans, designs and specifications. They must not be used, reproduced or copied in whole or part without prior written consent of Mackenzie Architects. Copyright Mackenzie Architects. All rights reserved.			

MACKENZIE ARCHITECTS





- LEGEND:
1. RENDER & PAINT FINISH, DULUX 'ANTIQUE WHITE U.S.A'
  2. RENDER & PAINT FINISH, WATTYL 'URBAN GREY'
  3. BANDED RENDER & PAINT FINISH, WATTYL 'URBAN GREY'
  4. RENDER & PAINT FINISH, RESENE DARK BUFF
  5. FACE BRICK, BORAL RIO BLUE
  6. METAL DECK ROOFING AND CLADDING, COLORBOND JASPER
  7. ALUMINIUM FRAMED GLAZING
  8. ALUMINIUM FRAMED SLIDING GLASS PANELS ABOVE FROSTED GLASS BALUSTRADE
  9. ALUMINIUM FRAMED CLEAR GLASS BALUSTRADE
  10. ALUMINIUM FRAMED GLAZED LOUVRES

C	DA AMENDED	PA	2011.08.30
R	DA AMENDED	PA	2011.08.30
A	DA SUBMISSION TO COUNCIL	PA	2011.08.30
RE	REVISION	PA	2011.08.30

**MACKENZIE ARCHITECTS**  
Chartered Architect No. 6033  
ABN 46 129 502 772  
4/3 The Postern  
Castlereag NSW 2068  
Phone: (02) 9967 9966  
Fax: (02) 9967 9977  
www.mackenzearchitects.com.au  
info@mackenzearchitects.com.au

Client:  
AGH Holdings Pty Ltd  
Job:  
**MULTI-RESIDENTIAL DEVELOPMENT**  
573-585 Pacific Highway, Killara  
Drawing Title:  
**SECTIONS 1**  
Section 1, Section 2, Section 3, Worksheet

Scale: 1:100, 1:150.95	Date:	Revision:
Project No: <b>10/15</b>	Drawing No.: <b>A-300</b>	C
Drawn: FA	Checked By: DM	
Rev Date: 2008/09/11		

Copyright  
Mackenzie Architects is the owner of the copyright subsisting in these drawings, plans, designs and specifications. They must not be used, reproduced or copied in whole or part without prior written consent of Mackenzie Architects.  
Copyright Mackenzie Architects. All rights reserved.